

SCANNING LASER RANGE FINDER

UST-05LX
UST-10LX
UST-20LX

Features

- High speed
- Long distance
- Wide range
- Compact and lightweight

Applications

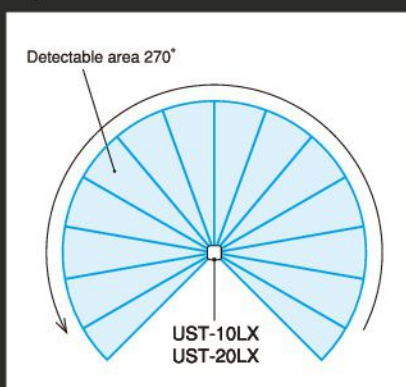
- Service robot
- Research robot
- Medical robot



Specifications

Part No.	UST-05LX	UST-10LX	UST-10LX-H01	UST-20LX	UST-20LX-H01
Power supply	12VDC / 24VDC (10-30VDC ripple: 10% or less)				
Consumption current	150mA or less (450mA when switching on)				
Light source	Semiconductor laser (905nm) , class 1				
Distance	0.06-5m (White sheet) 0.06-2m (Black sheet with 10% reflectivity) Max.detection distance : 15m	0.06-10m (White sheet) 0.06-4m (Black sheet with 10% reflectivity) Max. detection distance : 30m		0.06-20m (White sheet) 0.06-8m (Black sheet with 10% reflectivity) Max. detection distance : 60m	
Distance accuracy	±40mm				
Repeatability	$\sigma < 30\text{mm}$				
Scanning angle	270 degrees				
Scanning time	25ms per scan				
Angular resolution	0.25°	0.25°	0.125°	0.25°	0.125°
Start-up time	10sec or less				
Interface	Ethernet 100BASE-TX				
Ambient temperature	-10 to 50 °C				
Protective structure	IP65				
Weight	130g (excluding cables)				

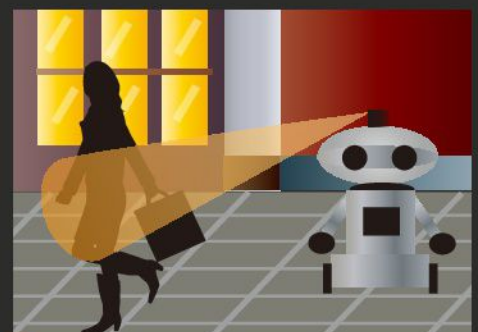
System structure



Applications



- Interactive media systems



- Environment recognition for autonomous service robots